

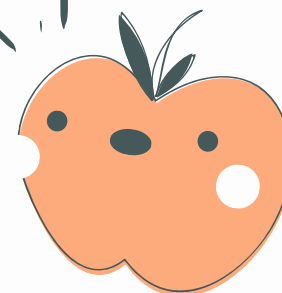
Verb to be



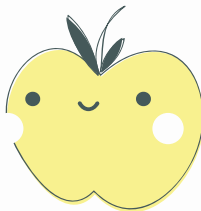
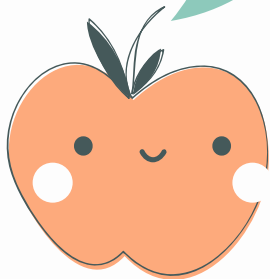
I AM JULIA



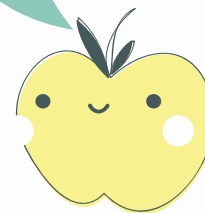
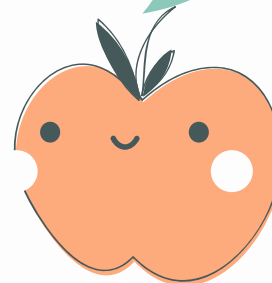
YOU ARE
JULIA



SHE IS
JULIA



WE ARE APPLES





THEY ARE
APPLES

This panel shows three apples (red, orange, and yellow) and a strawberry. The apples have simple faces with two dots for eyes and a curved line for a smile. The strawberry is red with green leaves and small black seeds. They are set against a white background with stylized grey clouds and brown tree branches with green leaves at the top corners.



HE IS
MARCOS

This panel shows two apples (orange and yellow) and a strawberry. The apples have simple faces with two dots for eyes and a curved line for a smile. The strawberry is red with green leaves and small black seeds. They are set against a white background with stylized grey clouds and brown tree branches with green leaves at the top corners.

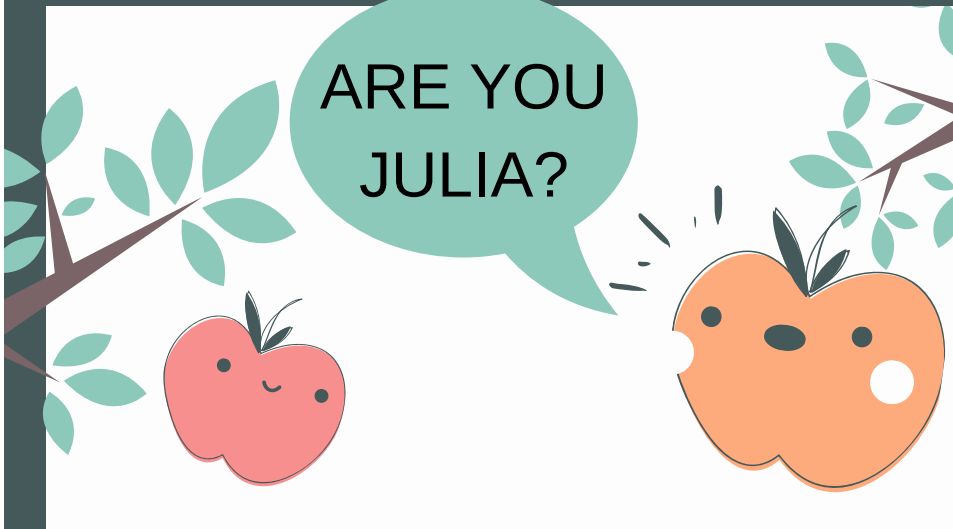
I AM
MARCOS



IT IS A
TREE

This panel shows a single orange apple and a tree. The apple has a simple face with two dots for eyes and a curved line for a smile. The tree is brown with green leaves. They are set against a white background with stylized grey clouds.

Questions and Answers



ARE YOU
JULIA?

A comic panel showing a red apple with a smiling face on the left. A speech bubble from the apple contains the text 'ARE YOU JULIA?'. To the right of the speech bubble is an orange apple with a surprised expression, indicated by radiating lines around its head. The background includes a tree branch with green leaves and a grey cloud.



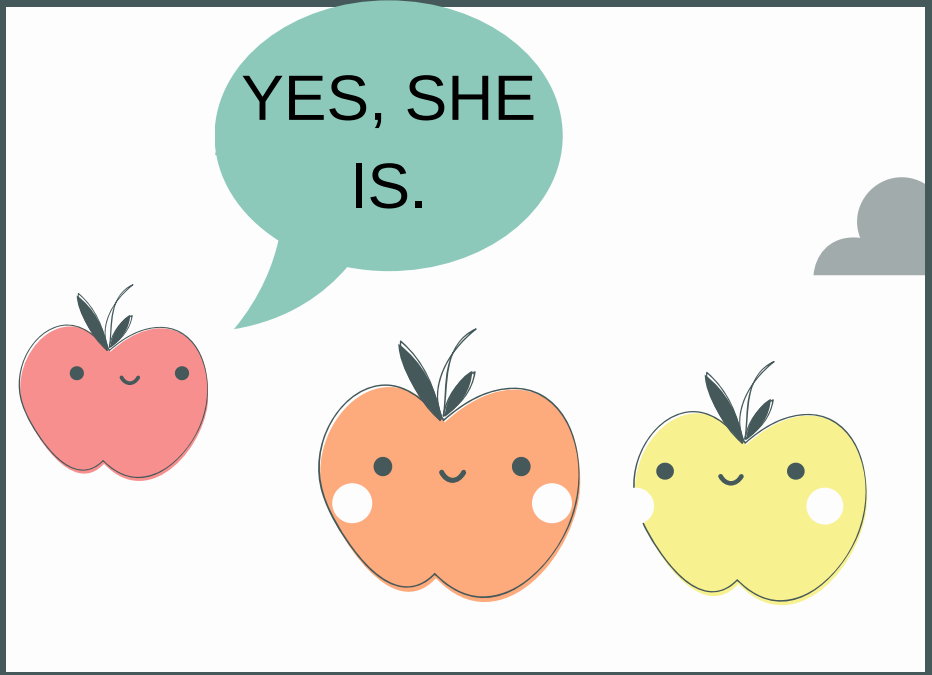
YES, I AM.

A comic panel showing a red apple with a smiling face on the left. A speech bubble from the apple contains the text 'YES, I AM.'. To the right of the speech bubble is an orange apple with a happy expression, indicated by a closed, curved mouth. The background includes a tree branch with green leaves and a grey cloud.



IS SHE
JULIA?

A comic panel showing a red apple with a smiling face on the left. A speech bubble from the apple contains the text 'IS SHE JULIA?'. To the right of the speech bubble are two apples: an orange one and a yellow one, both with happy expressions. The background includes a tree branch with green leaves and a grey cloud.



YES, SHE
IS.

A comic panel showing a red apple with a smiling face on the left. A speech bubble from the apple contains the text 'YES, SHE IS.'. To the right of the speech bubble are two apples: an orange one and a yellow one, both with happy expressions. The background includes a tree branch with green leaves and a grey cloud.



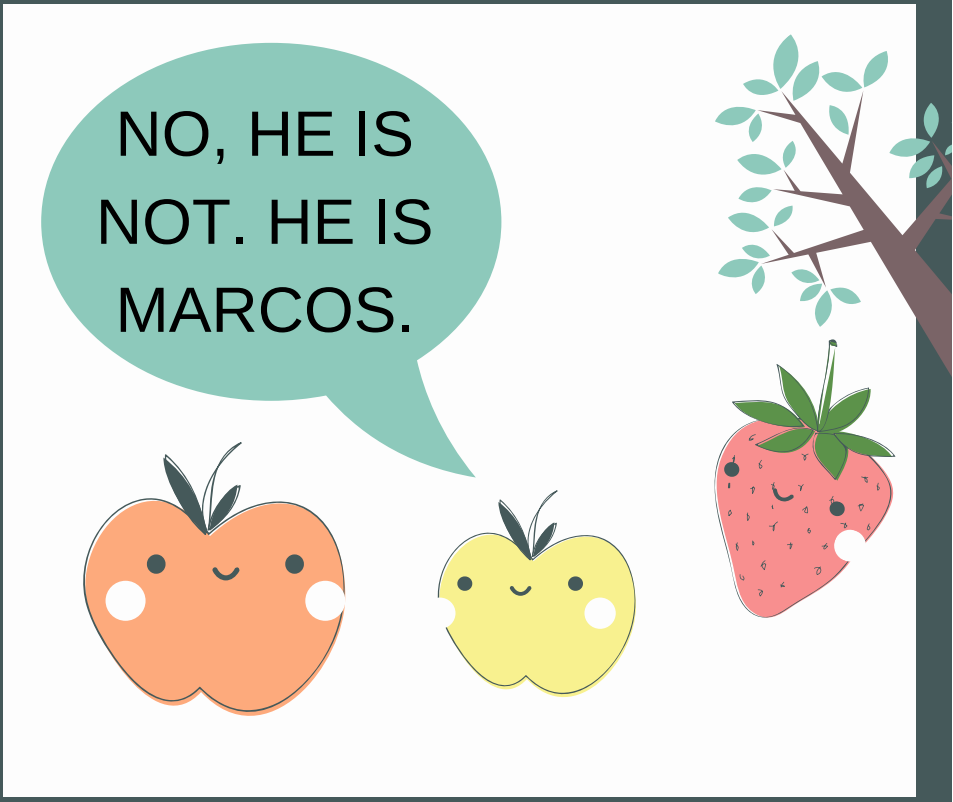
ARE WE FRIENDS?



YES, WE ARE.



IS HE
JULIA?



NO, HE IS
NOT. HE IS
MARCOS.



ARE THEY
APPLES?

YES, THEY
ARE.

